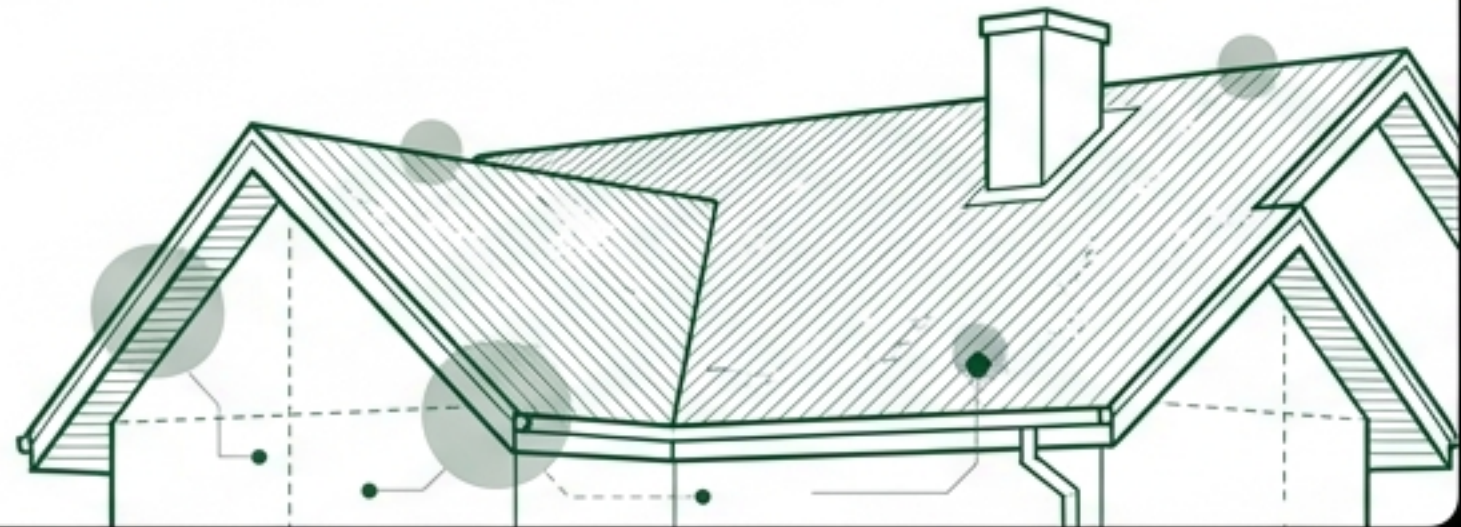


# Roof Repair in Deptford, NJ

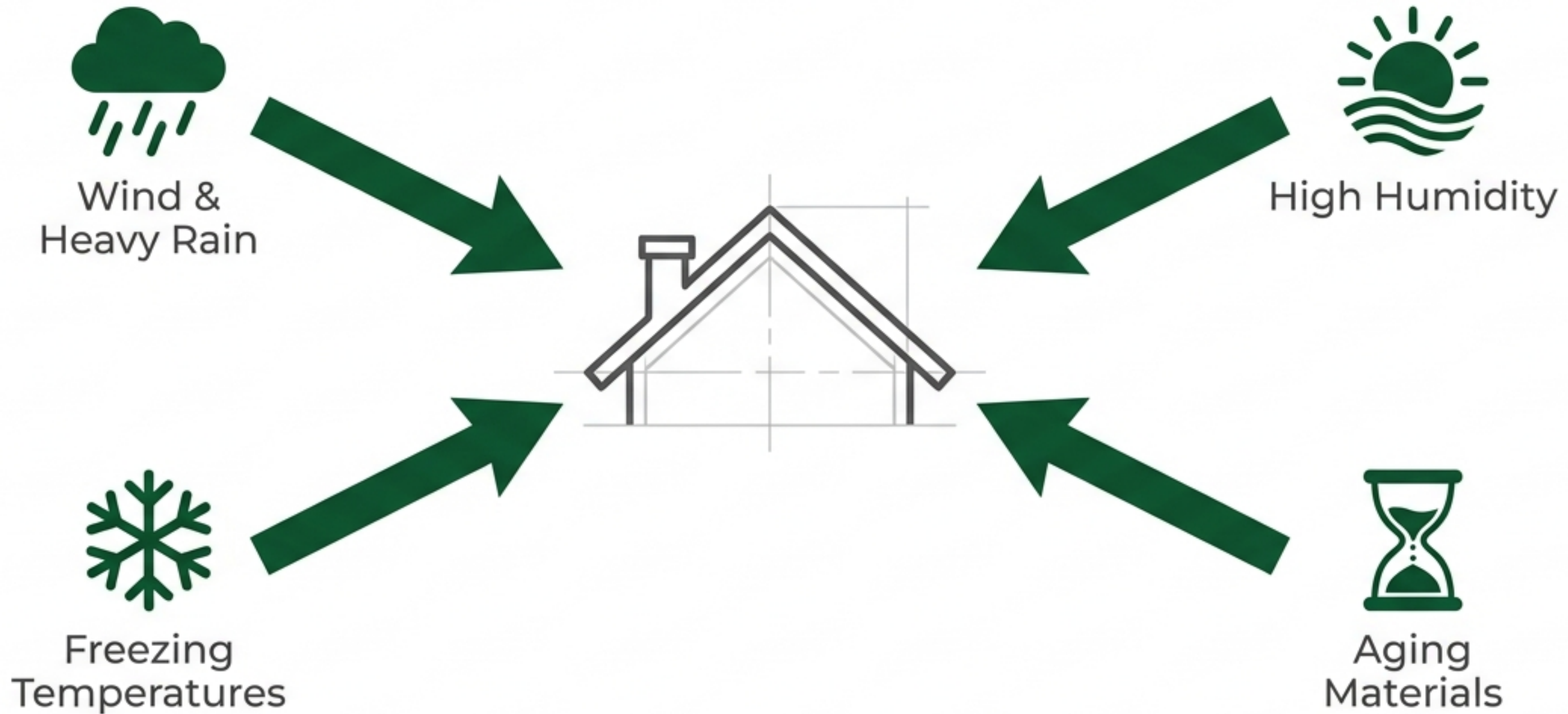
The Homeowner's Guide to Identifying  
& Fixing Common Problems

T.A. Hughes III Roofing, Siding & Windows | 45+ Years of Local Excellence



# The Deptford Stress Test

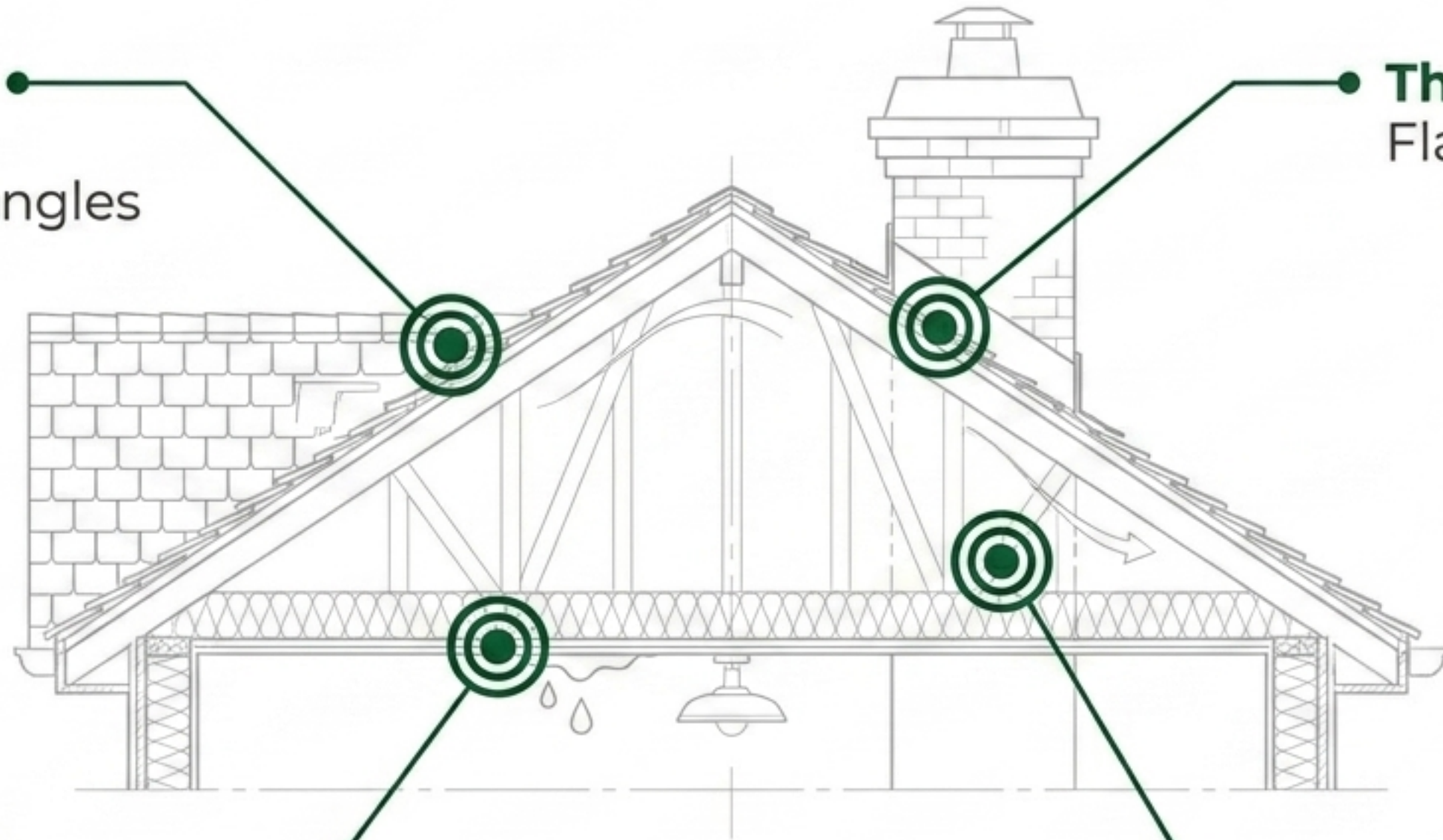
South Jersey weather puts constant strain on aging roofing systems.



# Where Roofs Fail

**The Surface:**  
Missing or  
Damaged Shingles

**The Joints:**  
Flashing Failures



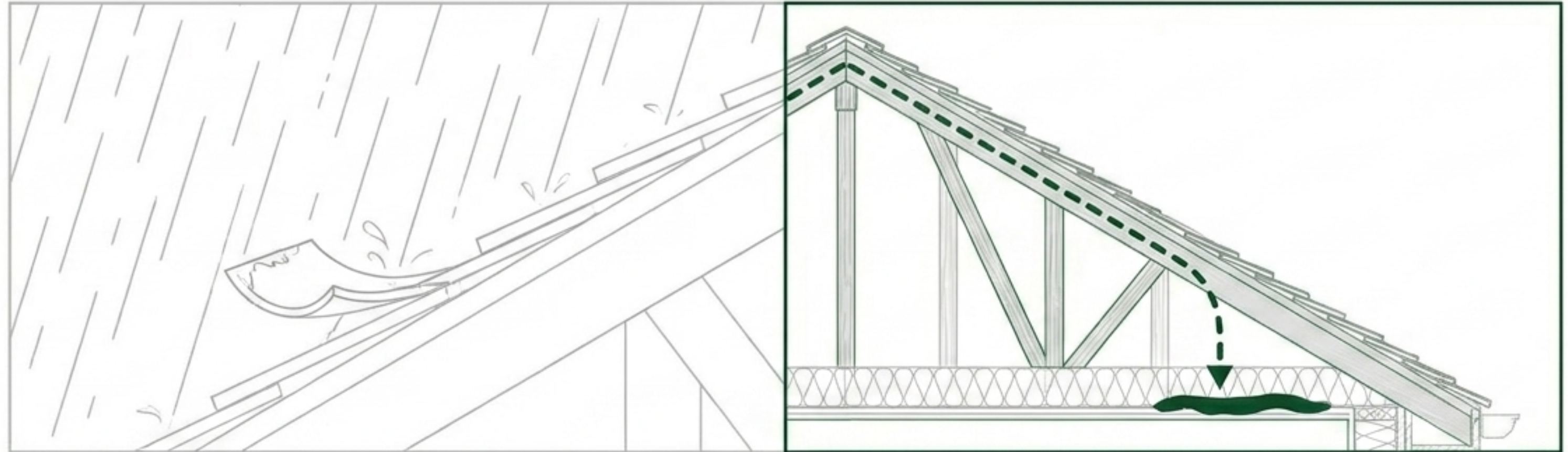
**The Interior:**  
Roof Leaks &  
Water Stains

**The Attic:**  
Poor Roof  
Ventilation

# The Hidden Danger of Leaks

**The tricky part: Water travels. The source of the leak is rarely directly above the ceiling stain.**

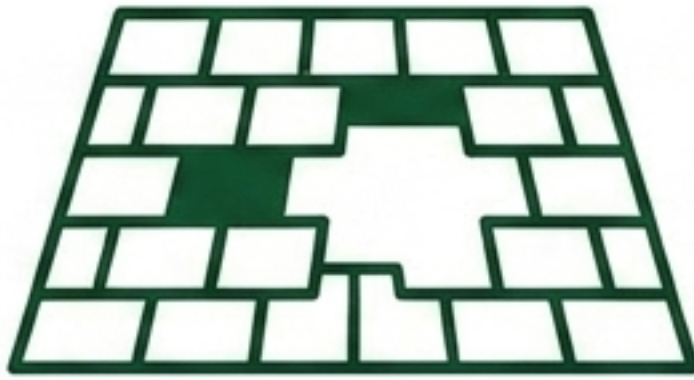
- ✓ Water stains on ceilings
- ✓ Dripping during storms
- ✓ Musty odors in the attic



If you notice water inside your home, the problem is already advanced.

# Spotting Shingle Damage

High winds, heavy rain, and aging materials are the primary culprits behind shingle failure.



## Bare Spots

Exposed areas where shingles have blown off.



## Shingles on Ground

The most obvious sign of severe storm damage.



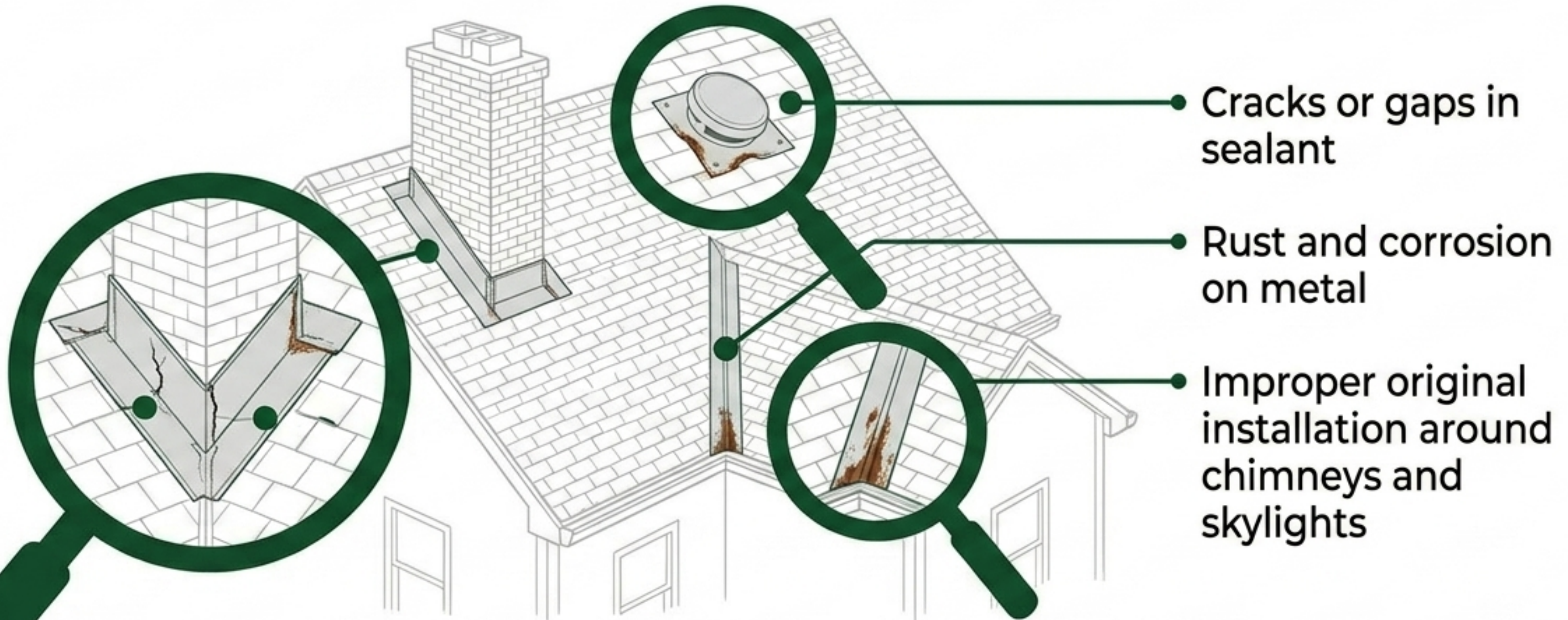
## Lifted Areas

Uneven shingles vulnerable to wind uplift.

**Pro Tip:** Do a quick ground-level visual check after every major Deptford storm. Catching missing shingles early prevents water intrusion.

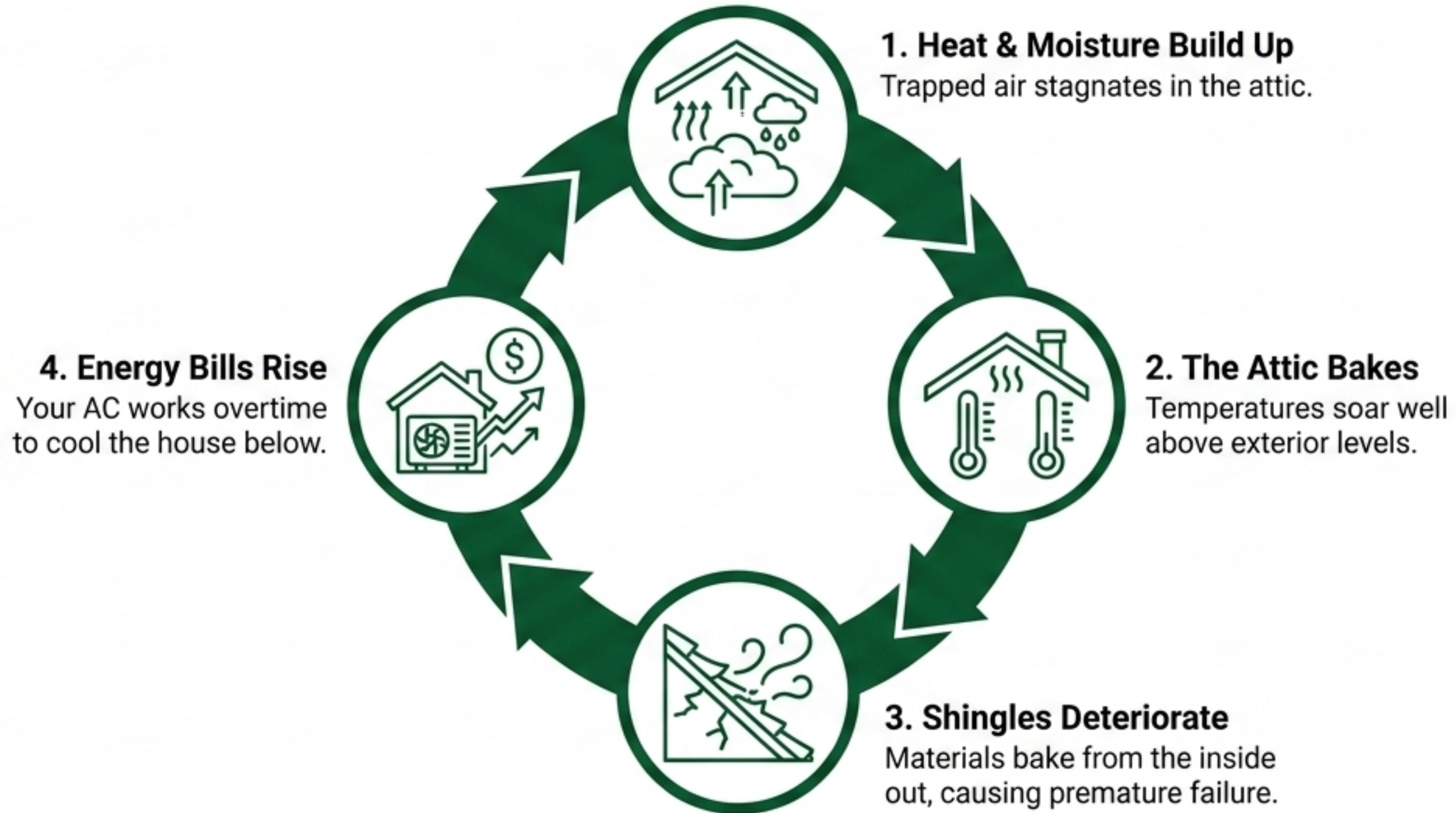
# Flashing: The First Line of Defense

Flashing protects your roof's most vulnerable joints. Even with perfect shingles, failed flashing lets water straight into your home.



# The Hidden Threat: Poor Ventilation

In Deptford's humid summers, bad airflow drastically shortens your roof's lifespan.



# Repair or Replace?

Most asphalt roofs last 20–30 years.

How to know which path to take:

## Repair

- Damage is minor and localized
- Roof is relatively new
- No structural issues present

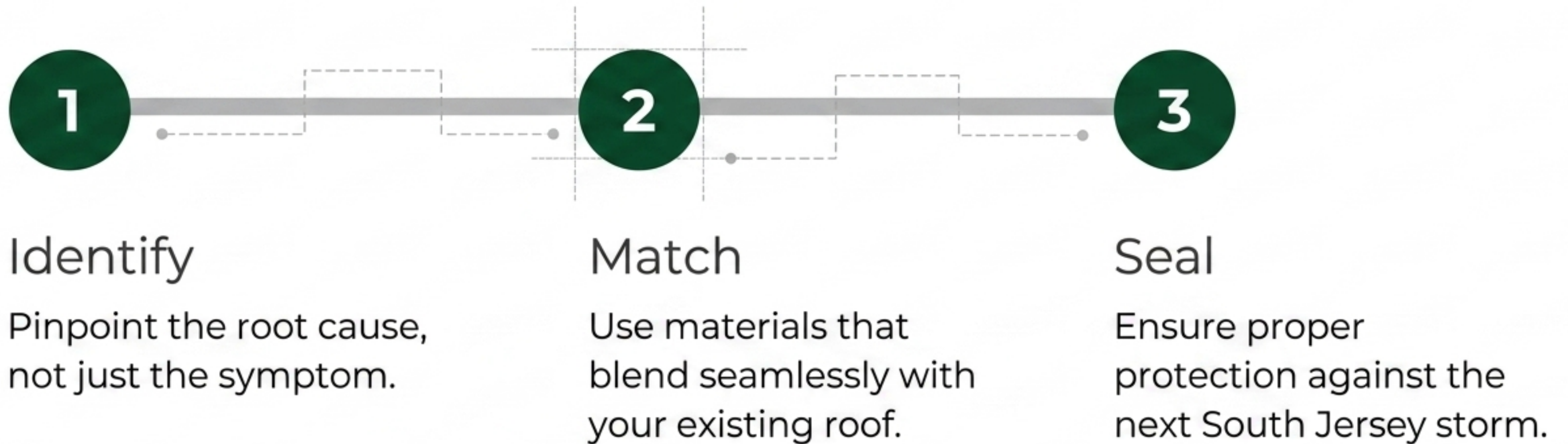
## Replace

- Damage is widespread
- Roof is nearing the end of its 20-30 year lifespan
- You are paying for repeated, frequent repairs



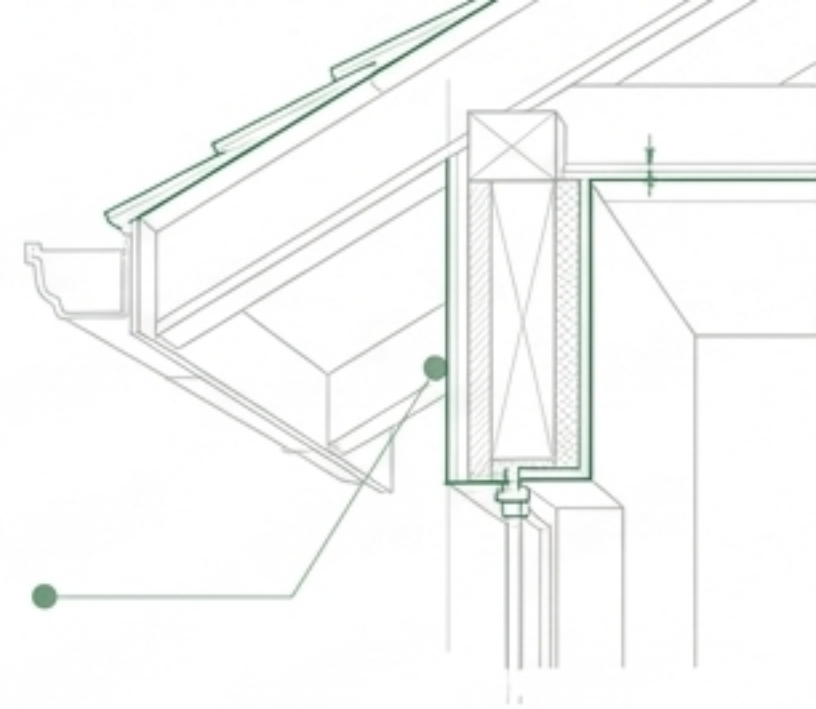
# Fast, Professional Repairs

Most repairs take just a few hours to a full day, requiring minimal equipment and causing minimal disruption.



# Hiring Local Expertise

A contractor must understand Gloucester County building codes and South Jersey weather patterns.



## What to Look For

- + Licensed and fully insured
- + Provides clear, written estimates
- + Strong local reviews and transparent communication

## Red Flags

- ✗ Offers quick fixes without a full inspection
- ✗ Only talks about price, never clearly explaining the actual problem



# Stop guessing. Start protecting.

Catching roofing problems early saves you thousands.  
Schedule a professional roof inspection today.

Honest evaluations. | Clear recommendations. | Zero pressure—just real answers.

Contact T.A. Hughes III Roofing | 45+ Years of South Jersey Excellence